

**BOW VALLEY REGIONAL TRANSIT SERVICES COMMISSION
REGULAR MEETING**

**BVRTSC CUSTOMER SERVICE CENTRE – IAN MACKIE BOARD ROOM
(221 BEAVER ST. BANFF)**

AGENDA

July 08, 2015: 2:00pm – 4:00pm

1. Call to Order
2. Approval of the Agenda
3. Approval of the June 10, 2015 Regular Meeting Minutes (attached)
4. Old Business (including Standing Items)
 - a) CAO's Monthly Report - July 2015
 - b) Bring Forward List of Pending Items (attached).
 - c) Transit Service Monthly Statistics (attached).
 - d) Rolling stock challenge and spare policy discussion
5. New Business
 - a) Budget Process Discussion
 - b) Re-wrapping Regional Buses
6. Adjournment

CAO Report – July 2015

In the first few weeks in this role, my focus has been on gathering as much information as possible from many sources, including meetings with local Administration and Board Members as well as Commission staff contractors. In addition, researching and reviewing current and upcoming projects has been part of my introduction to BVRTSC. This research and information gathering will continue as we move through the summer.

The current items to report on are:

- Alberta Transportation Inspection Results:
 - We received a letter from Alberta Transportation along with the results from their Transportation Inspection recently completed. There were no major areas of non-compliance, however the report identified 5 areas needing some correction out of 25. Changes have been implemented to meet requirements in two of the areas. The remaining three areas have changes in progress and will be completed over the summer. No date has been formalized by Alberta Transportation for a follow up, however the expectation would be that this will occur at some point in the future.
- HarGroup Regional Survey:
 - Jon Hartenberger from HarGroup attended a meeting in Banff with representatives from Canmore, Banff and BVRTSC to discuss the non-user survey and deliverables. He is currently formulating the questions for the survey and will report back this week with the intent of having the survey available to be online once questions have been vetted and approved. Distribution of the survey links will be requiring the support of the Board through contacts as committed to previously.
- Route 1 Doubling:
 - New brochures have all been delivered and signs set up for the enhanced summer service on Route 1. The first weekend of the doubling of Route 1 went well with drivers being able to maintain schedules with adequate separation. With one weekend completed, the ridership comparison is as follows:

▪ June 20/21 st Single Trip Schedule	2144 Riders
▪ June 27/28 th Double Trip Schedule	2928 Riders

- By comparison, Route 2 had the following numbers on the same weekends:
 - June 20/21 Single Trip Schedule 2014 Riders
 - June 27/28 Single Trip Schedule 2157 Riders

- Lake Louise Service:
 - Discussions have been ongoing with Parks Canada on the potential plan for service to Upper Lake Louise and Moraine Lake. The parking study being completed by Bunt and Associates has begun and data collection will be completed on the September long weekend.

- Canmore Local Service:
 - Discussions with the consultant hired to complete the implementation plan have been occurring on a weekly basis. The draft implementation plan is due to be circulated to stakeholders by July 17 for comments and adjustments. The final report is due to BVRTSC by August 21.

- Campground Stats:
 - With the promotion of the Campground Free Ride Program, the ridership in to town to date for the month of June has increased:
 - 2014 - 2381
 - 2015 - 2958
 - **Total Increase 577**

- Green Trip Funding
 - Per a recent conversation with Alex Arent, Municipal Grants Technologist from Alberta Transportation our Green Trip funding has been recommended for approval and forwarded to the Minister for final approval. The process timeline is currently unknown at this time due to the change in Government however it is moving forward.

BRING FORWARD LIST OF ITEMS PENDING (as of May 6, 2015)

ITEM	Date Initiated	Pending Date	Comments:
BVRTSC13-47 Moved by Sean Krausert to accept the recommendations in the report as presented and obtain the Customer Service Center Office Space as outlined in the report 2013-19 with the following additional items; <ul style="list-style-type: none"> Negotiate a reduced lease rate with the Town of Banff for the current office space in the industrial compound when its lease is expired. 	August 2013	September 2014	Awaiting confirmation on discussed cost.
BVRTSC14-30 Moved by Stavros Karlos to direct administration to draft a municipal capital allocation policy prior to the end of 2014.	April 2014	June 2015	As a result of BVRTSC14-99 , this item was postponed to January 2015. As a result of BVRTSC15-004 , this item was postponed to June 2015.
BVRTSC14-61 Moved by Sean Krausert that the Commission approve Administration undertaking the work required (within the specified timelines) as requested by the Town of Canmore to investigate the feasibility of operating a local transit service in Canmore.	June 2014	Sept 2014 but now August 2015	Have been in communication with Town of Canmore administration with respect to timelines, and the Oct/Nov 2014 timeline will work. Town of Canmore has approved \$30K further funding for detailed implementation strategy (expected to be done by August 2015).
BVRTSC14-109 - Sean Krausert moves that administration prepares a spare bus ratio policy for the Commission's consideration by June 30, 2015 prior to purchase of any further rolling stock.	October 2014	June 30 2015	
BVRTSC15-011 - Sean Krausert moves that administration seek a revised proposal from HarGroup for an electronic survey only, but with an expanded scope beyond increased frequency, e.g. other potential barriers or concerns of non-users. Followed by March 2015 resolution: BVRTSC15-017 Stavros Karlos moves to direct BVRTSC Administration to proceed with HarGroup proposal, and funded by a 50/50 cost split between Canmore and Banff.	February 2015	TBD	COMPLETED – To be removed next report. This motion follows upon the following earlier motions: BVRTSC14 - 128 Grant Canning moved that BVRTSC acknowledge the request from Banff and agrees to investigate an increase to the regional service as requested. BVRTSC14 - 129 Sean

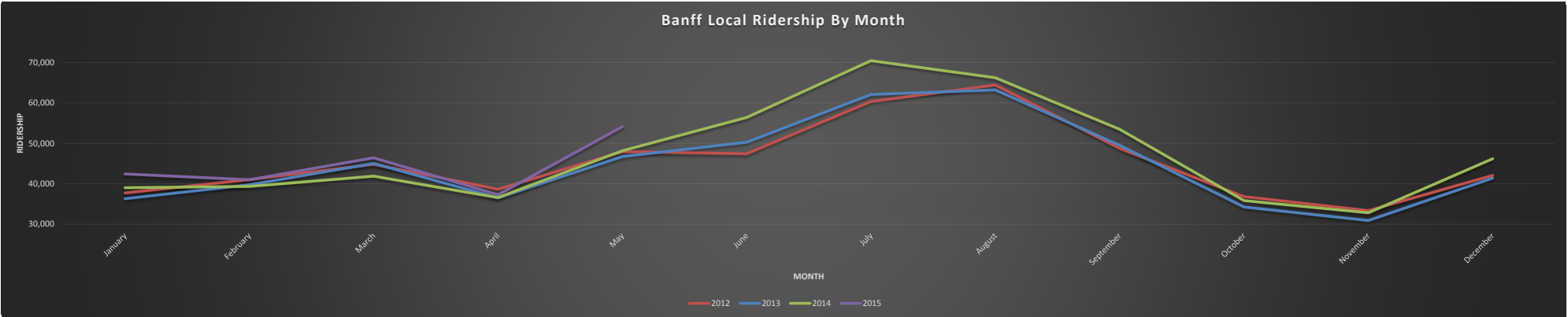
			Krausert moved that administration be directed to determine the best option to obtain the necessary information needed with respect to potential increased ridership to make a decision about increased regional service, and to report back along with a budget needed to pursue this option by the February 2015 regular board meeting.
BVRTSC15-023 Sean Krausert moves that administration investigate an alternate system to secure bikes on the bus that allows the aisle to remain free.	March 2015	April 2015	COMPLETED – To be removed next report.
BVRTSC15-024 Sean Krausert moves to approve the concept of doubling the frequency of Route 1 from June 27 th thru to the September long weekend, and directs BVRTSC Administration to provide the cost and related information to Banff Council in order to consider this increased service.	March 2015	TBD	COMPLETED – To be removed next report. Approved by Banff Council.

Bow Valley Regional Transit Services Commission

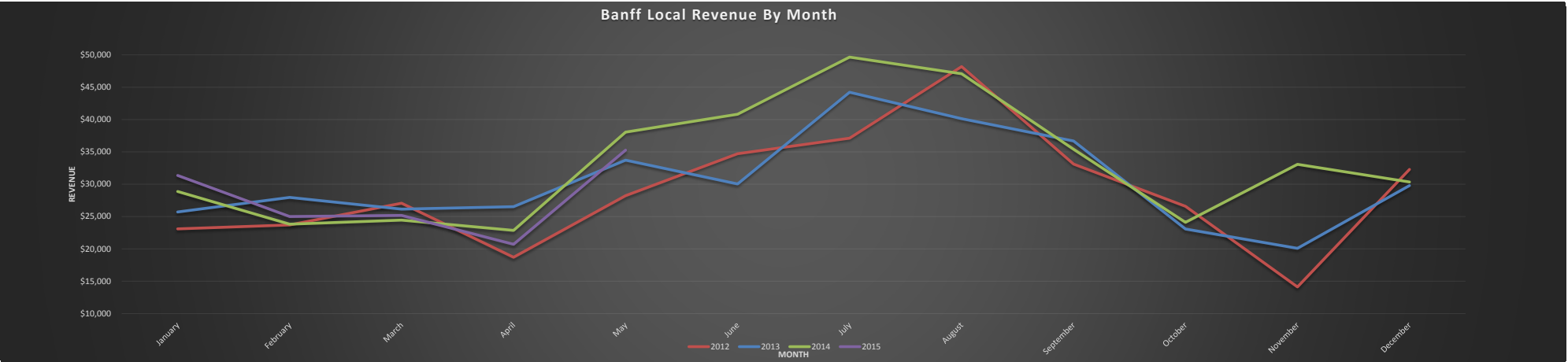


Banff Local Service Ridership and Revenue Statistics

Banff Local Ridership/Revenue Analysis									
Ridership									
Month	2012	2013	2014	2015	2014 Running Total	2015 Running Total	Running Total Difference	2014 to 2015 Monthly Difference	2014 to 2015 Monthly % Difference
January	37,730	36,302	39,021	42,433	39,021	42,433	3,412	3,412	8.7%
February	41,031	39,738	39,353	41,001	78,374	83,434	5,060	1,648	4.2%
March	44,826	45,039	41,887	46,422	120,261	129,856	9,595	4,535	10.8%
April	38,652	36,510	36,565	37,285	156,826	167,141	10,315	720	2.0%
May	47,945	46,739	48,180	54,119	205,006	221,260	16,254	5,939	12.3%
June	47,447	50,267	56,419		261,425				
July	60,356	62,089	70,456		331,881				
August	64,441	63,224	66,224		398,105				
September	48,767	49,512	53,483		451,588				
October	36,818	34,244	35,835		487,423				
November	33,359	30,911	32,820		520,243				
December	42,073	41,403	46,194		566,437				
Grand Total:	543,445	535,978	566,437	0	566,437				-100.0%
				0					End of Year Comparison to 2013



Revenue									
Month	2012	2013	2014	2015	2014 Running Total	2015 Running Total	Running Total Difference	2014 to 2015 Monthly Difference	2014 to 2015 Monthly % Difference
January	\$23,104	\$25,711	\$28,869	\$31,352	\$28,869.44	\$31,352.00	\$2,482.56	\$2,482.56	8.6%
February	\$23,695	\$27,959	\$23,824	\$25,006	\$52,693.21	\$56,358.00	\$3,664.79	\$1,182.23	5.0%
March	\$27,056	\$26,138	\$24,454	\$25,175	\$77,147.11	\$81,532.50	\$4,385.39	\$720.60	2.9%
April	\$18,700	\$26,536	\$22,861	\$20,711	\$100,007.66	\$102,243.50	\$2,235.84	-\$2,149.55	-9.4%
May	\$28,224	\$33,720	\$38,052	\$35,268	\$138,059.77	\$137,511.15	-\$548.62	-\$2,784.46	-7.3%
June	\$34,706	\$30,034	\$40,828		\$178,887.52				
July	\$37,127	\$44,220	\$49,655		\$90,482.75				
August	\$48,190	\$40,125	\$47,076		\$275,618.52				
September	\$33,119	\$36,670	\$35,404		\$311,022.52				
October	\$26,578	\$23,066	\$24,115		\$335,137.52				
November	\$14,119	\$20,087	\$33,078		\$368,215.52				
December	\$32,287	\$29,795	\$30,344		\$398,559.52				
Grand Total:	\$ 346,903.52	\$364,061.60	\$398,559.52	\$137,511.15	\$398,559.52				-65.5%



BANFF LOCAL TRANSIT REVENUE BREAKDOWN
2015 Actual

Month	Fares	Passes	Other	Total	Budget
January	\$23,847	\$7,505		\$31,352	\$ 25,062.50
February	\$22,513	\$2,493		\$25,006	\$ 25,062.50
March	\$22,902	\$2,273		\$25,175	\$ 25,062.50
April	\$19,532	\$1,179		\$20,711	\$ 33,062.50
May	\$32,514	\$2,754		\$35,268	\$ 33,062.50
June				\$0	\$ 33,062.50
July				\$0	\$ 41,062.50
August				\$0	\$ 41,062.50
September				\$0	\$ 41,062.50
October				\$0	\$ 33,062.50
November				\$0	\$ 33,062.50
December				\$0	\$ 33,062.50
Totals:	\$121,308	\$16,204	\$0	\$137,511	\$396,750

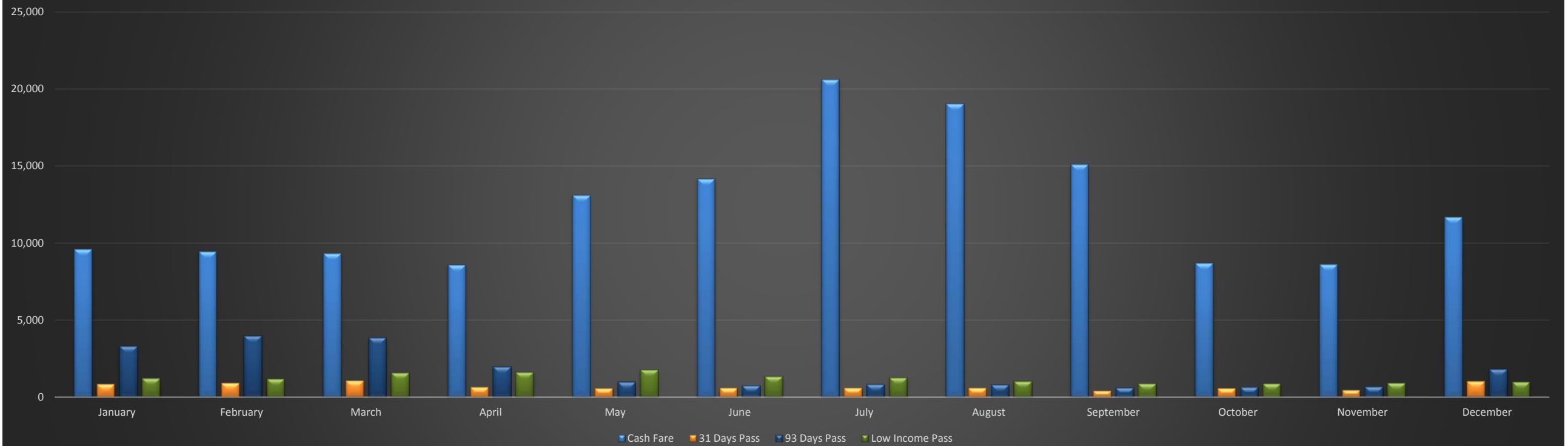
BANFF LOCAL TRANSIT REVENUE BREAKDOWN
2014 Actual

Month	Fares	Passes	Other	Total	Budget
January	\$20,289	\$8,580		\$28,869	\$23,853.33
February	\$20,788	\$3,036		\$23,824	\$23,853.33
March	\$20,683	\$3,771		\$24,454	\$23,853.34
April	\$18,812	\$4,049		\$22,861	\$29,500.00
May	\$29,459	\$3,344	\$5,250	\$38,052	\$29,500.00
June	\$35,714	\$5,114		\$40,828	\$29,500.00
July	\$48,321	\$1,334		\$49,655	\$44,433.33
August	\$45,698	\$1,378		\$47,076	\$44,433.33
September	\$33,590	\$1,814		\$35,404	\$44,433.34
October	\$19,727	\$4,388		\$24,115	\$25,400.00
November	\$19,638	\$13,440		\$33,078	\$25,400.00
December	\$25,990	\$4,354		\$30,344	\$25,400.00
Totals:	\$338,710	\$54,600	\$5,250	\$398,560	\$369,560

Local Ridership By Fare Type 2015

	Banff Local Service Ridership By Fare Type												
	2014												
Fare Type	January	February	March	April	May	June	July	August	September	October	November	December	Total
Column1	Column2	Column3	Column4	Column5	Column6	Column7	Column8	Column9	Column10	Column11	Column12	Column13	Column14
Cash Fare													
Adult	8,954	8,869	8,533	7,812	10,680	10,975	16,296	14,971	11,416	7,739	8,135	10,926	125,306
Senior	332	306	505	503	2,223	2,875	3,232	3,089	3,471	754	356	531	18,177
Child	312	284	276	257	209	312	1,092	961	224	198	117	235	4,477
Cash Fare Total	9,598	9,459	9,314	8,572	13,112	14,162	20,620	19,021	15,111	8,691	8,608	11,692	147,960
Column1	Column2	Column3	Column4	Column5	Column6	Column7	Column8	Column9	Column10	Column11	Column12	Column13	Column14
Roam Token													
All Categories	74	72	50	32	83	127	158	33	12	26	5	6	678
Column1	Column2	Column3	Column4	Column5	Column6	Column7	Column8	Column9	Column10	Column11	Column12	Column13	Column14
10 Ride Pass													
All Categories	63	72	83	58	74	70	83	80	73	25	91	148	920
Column1	Column2	Column3	Column4	Column5	Column6	Column7	Column8	Column9	Column10	Column11	Column12	Column13	Column14
3 Day Pass													
All Categories	55	24	57	12	181	156	215	256	101	18	36	60	1,171
Column1	Column2	Column3	Column4	Column5	Column6	Column7	Column8	Column9	Column10	Column11	Column12	Column13	Column14
Day Pass													
All Categories	554	640	560	812	1,871	2,244	4,180	3,929	2,724	914	521	617	19,566
Column1	Column2	Column3	Column4	Column5	Column6	Column7	Column8	Column9	Column10	Column11	Column12	Column13	Column14
31 Days Pass													
Adult	790	911	1,027	620	557	581	554	537	383	554	445	992	7,951
Senior	54	0	41	12	0	1	26	42	38	0	0	8	222
Child	2	0	0	18	0	0	0	0	0	0	0	18	38
31 Days Pass Total:	846	911	1,068	650	557	582	580	579	421	554	445	1,018	8,211
Column1	Column2	Column3	Column4	Column5	Column6	Column7	Column8	Column9	Column10	Column11	Column12	Column13	Column14
93 Days Pass													
Adult	3,316	3,986	3,841	1,986	955	708	792	732	581	652	666	1,789	20,004
Senior	0	0	0	0	0	4	29	31	0	0	0	0	64
Child	0	0	0	5	22	28	14	29	17	0	16	28	159
93 Days Pass Total:	3,316	3,986	3,841	1,991	977	740	835	792	598	652	682	1,817	20,227
Column1	Column2	Column3	Column4	Column5	Column6	Column7	Column8	Column9	Column10	Column11	Column12	Column13	Column14
186 Days Pass													
Adult	2,344	2,144	2,493	1,873	1,542	1,045	900	701	778	922	1,366	2,243	18,351
Senior	97	101	118	43	15	1	6	0	0	28	45	74	528
Child	0	0	0	41	0	0	0	0	0	0	15	18	74
Column1	Column2	Column3	Column4	Column5	Column6	Column7	Column8	Column9	Column10	Column11	Column12	Column13	Column14
Low Income Pass													
All Categories	1,214	1,207	1,589	1,629	1,776	1,359	1,260	1,046	891	877	912	981	14,741
Low Income Pass Total:	1,214	1,207	1,589	1,629	1,776	1,359	1,260	1,046	891	877	912	981	14,741
Column1	Column2	Column3	Column4	Column5	Column6	Column7	Column8	Column9	Column10	Column11	Column12	Column13	Column14
Regional Ride - Cash	26	15	18	15	28	10	11	20	15	10	3	18	189
Hotel Partners	20,328	20,166	22,235	20,392	27,584	31,077	38,429	36,969	30,518	21,732	18,848	25,526	313,804
Transfers - Local	100	115	139	121	124	157	154	148	151	118	77	102	1,506
Infant Free Ride	42	159	57	39	15	103	220	212	141	85	64	200	1,337
Accessories	234	169	154	169	118	186	286	274	260	64	43	172	2,129
Other (Special Events (campground))					0	2,609	237	0	0	0	0	0	2,846
+3% Industry Correction						1,643	2,052	1,929	1,558	1,044	956	1,345	10,527
Total Ridership	39,021	39,353	41,887	36,565	48,180	56,419	70,456	66,224	53,483	35,835	32,820	46,194	566,437

Local Ridership By Fare Type 2014



Banff Local Ridership By Fare Type													
Sulphur Mountain Route (Route 1)													
Fare Type	2014												
	January	February	March	April	May	June	July	August	September	October	November	December	Total
Cash Fare													
Adult	3,515	3,577	3,548	3,626	4,451	5,290	6,186	5,847	4,954	3,319	3,038	4,299	51,650
Senior	103	93	225	272	813	1,111	1,150	1,072	1,254	293	192	239	6,817
Child	209	129	131	139	137	175	436	353	125	147	60	121	2,162
Cash Fare Total	3,827	3,799	3,904	4,037	5,401	6,576	7,772	7,272	6,333	3,759	3,290	4,659	60,629
Roam Token													
All Categories	16	36	4	26	15	84	125	17	9	22	5	1	360
Roam Token Total:	16	36	4	26	15	84	125	17	9	22	5	1	360
10 Ride Pass													
All Categories	47	36	40	17	37	29	42	30	35	16	35	37	401
10 Ride Total:	47	36	40	17	37	29	42	30	35	16	35	37	401
3 Day Pass													
All Categories	28	0	10	6	51	59	59	69	34	8	8	41	373
3 Day Pass Total:	28	0	10	6	51	59	59	69	34	8	8	41	373
Day Pass													
All Categories	252	361	326	435	894	1,184	1,697	1,668	1,248	463	292	420	9,240
Day Pass Total:	252	361	326	435	894	1,184	1,697	1,668	1,248	463	292	420	9,240
31 Days Pass													
Adult	177	203	248	126	153	232	136	133	187	172	186	336	2,289
Senior	2	0	25	0	0	1	9	27	1	0	0	0	65
Child	0	0	0	18	0	0	0	0	0	0	0	18	36
31 Days Pass Total:	179	203	273	144	153	233	145	160	188	172	186	354	2,390
93 Days Pass													
Adult	557	441	419	310	352	342	379	341	256	205	222	436	4,260
Senior	0	0	0	0	0	3	26	30	0	0	0	0	59
Child	0	0	0	5	20	27	14	29	17	0	16	28	156
93 Days Pass Total:	557	441	419	315	372	372	419	400	273	205	238	464	4,475
186 Days Pass													
Adult	556	583	786	660	705	465	376	255	368	586	462	464	6,266
Senior	34	36	54	1	8	0	6	0	0	0	8	4	151
Child	0	0	0	41	0	0	0	0	0	0	15	18	74
186 Days Pass Total:	590	619	840	702	713	465	382	255	368	586	485	486	6,491
Low Income Pass													
All Categories	609	654	765	810	843	537	427	364	470	554	629	623	7,285
Low Income Pass Total:	609	654	765	810	843	537	427	364	470	554	629	623	7,285
Regional Ride - Pass Holder	44	38	37	36	36	59	93	91	59	23	32	75	623
Regional Ride - Cash	9	3	4	4	3	4	1	8	10	6	2	4	58
Hotel Partners	12,049	12,841	13,708	13,416	19,011	22,590	26,253	24,630	21,148	13,712	11,373	14,842	205,573
Transfers - Local	48	71	88	74	65	69	52	79	80	74	44	44	788
Transfers - Regional to Local	17	8	6	17	22	25	30	34	25	21	18	15	238
Infant Free Ride	20	82	28	17	6	36	97	72	65	26	40	87	576
Accessories	50	38	51	75	57	109	184	148	169	16	36	58	991
Special (TMC Free Trip)						18	1						19
Total Farebox Ridership						32,449	37,779	35,297	30,514	19,663	16,713	22,210	194,625
+3% Industry Correction						973	1,133	1,059	915	590	501	666	5,839
Total Ridership	18,342	19,230	20,503	20,131	27,679	33,422	38,912	36,356	31,429	20,253	17,214	22,876	306,349

Banff Local Ridership By Fare Type Tunnel Mountain Route (Route 2)

Fare Type	2014												
Cash Fare													
Adult	5,439	5,292	4,985	4,186	6,046	5,353	9,585	8,508	6,236	4,420	5,097	6,627	71,774
Senior	229	213	280	231	1,371	1,675	1,986	1,919	2,117	461	164	292	10,938
Child	103	155	145	118	69	120	623	569	98	51	57	114	2,222
Cash Fare Total	5,771	5,660	5,410	4,535	7,486	7,148	12,194	10,996	8,451	4,932	5,318	7,033	84,934
Roam Token													
All Categories	58	36	46	6	68	41	32	16	3	4	0	5	315
Roam Token Total:	58	36	46	6	68	41	32	16	3	4	0	5	315
10 Ride Pass													
All Categories	16	36	43	41	34	35	41	50	37	9	56	111	509
10 Ride Total:	16	36	43	41	34	35	41	50	37	9	56	111	509
3 Day Pass													
All Categories	27	24	47	6	118	85	156	175	57	10	28	19	752
3 Day Pass Total:	27	24	47	6	118	85	156	175	57	10	28	19	752
Day Pass													
All Categories	302	279	234	377	921	909	2,262	2,107	1,335	451	229	197	9,603
Day Pass Total:	302	279	234	377	921	909	2,262	2,107	1,335	451	229	197	9,603
31 Days Pass													
Adult	613	708	779	494	404	340	409	398	195	382	259	656	5,637
Senior	52	0	16	12	0	0	16	6	37	0	0	8	147
Child	2	0	0	0	0	0	0	0	0	0	0	0	2
31 Days Pass Total:	667	708	795	506	404	340	425	404	232	382	259	664	5,786
93 Days Pass													
Adult	2,759	3,545	3,422	1,676	603	363	409	387	325	447	444	1,353	15,733
Senior	0	0	0	0	0	0	3	0	0	0	0	0	3
Child	0	0	0	0	2	1	0	0	0	0	0	0	3
93 Days Pass Total:	2,759	3,545	3,422	1,676	605	364	412	387	325	447	444	1,353	15,739
186 Days Pass													
Adult	1,788	1,561	1,707	1,213	836	578	520	446	409	336	904	1,779	12,077
Senior	63	65	64	42	7	1	0	0	0	28	37	70	377
Child	0	0	0	0	0	0	0	0	0	0	0	0	0
186 Days Pass Total:	1,851	1,626	1,771	1,255	843	579	520	446	409	364	941	1,849	12,454
Low Income Pass													
All Categories	605	553	824	819	932	822	820	679	420	323	283	358	7,438
Low Income Pass Total:	605	553	824	819	932	822	820	679	420	323	283	358	7,438
Regional Ride - Pass Holder	61	54	54	52	48	32	57	56	26	16	35	41	532
Regional Ride - Cash	17	12	14	11	25	5	10	9	5	4	1	14	127
Hotel Partners	8,279	7,325	8,527	6,976	8,149	7,756	11,248	11,290	8,811	7,760	7,475	10,684	104,280
Transfers - Local	52	44	51	47	59	74	90	45	60	42	33	58	655
Transfers - Regional to Local	8	13	14	11	13	18	34	25	13	13	18	26	206
Infant Free Ride	22	77	29	22	7	63	98	136	72	59	24	113	722
Accessories	184	131	103	94	60	73	99	126	90	48	7	114	1,129
Special (TMC Free Trip)						2,590	234						2,824
Total Farebox Ridership						20,934	28,732	26,947	20,346	14,864	15,151	22,639	149,613
+3% Industry Correction						628	862	808	610	446	455	679	4,488
Total Ridership	20,679	20,123	21,384	16,434	19,772	21,562	29,594	27,755	20,956	15,310	15,606	23,318	252,493

**Banff Local Ridership By Fare Type
Cave & Basin Route (Route 4)**

Fare Type	2015								
	May	June	July	August	September	October	November	December	Total
Cash Fare									
Adult	262								262
Senior	57								57
Child	19								19
Cash Fare Total	338	0	0	0	0	0	0	0	338
Roam Token									
All Categories	0								0
Roam Token Total:	0	0	0	0	0	0	0	0	0
10 Ride Pass									
All Categories	0								0
10 Ride Total:	0	0	0	0	0	0	0	0	0
3 Day Pass									
All Categories	0								0
3 Day Pass Total:	0	0	0	0	0	0	0	0	0
Day Pass									
All Categories	54								54
Day Pass Total:	54	0	0	0	0	0	0	0	54
31 Days Pass									
Adult	2								2
Senior	8								8
Child	0								0
31 Days Pass Total:	10	0	0	0	0	0	0	0	10
93 Days Pass									
Adult	1								1
Senior	0								0
Child	0								0
93 Days Pass Total:	1	0	0	0	0	0	0	0	1
186 Days Pass									
Adult	3								3
Senior	0								0
Child	0								0
186 Days Pass Total:	3	0	0	0	0	0	0	0	3
Low Income Pass									
All Categories	0								0
Low Income Pass Total:	0	0	0	0	0	0	0	0	0
Regional Ride - Pass Holder	5								5
Regional Ride - Cash	0								0

Hotel Partners	250								250
Transfers - Local	0								0
Transfers - Regional to Local	5								5
Infant Free Ride	1								1
Accessories	5								5
Special (TMC Free Trip)	0								0
Total Farebox Ridership	672	0	0	0	0	0			672
+3% Industry Correction	20	0	0	0	0	0			20
Total Ridership	692	0	0	0	0	0	0	0	692

**Banff Local Ridership By Fare Type
Cave & Basin Route (Route 4)**

Fare Type	2014								
	May	June	July	August	September	October	November	December	Total
Cash Fare									
Adult	183	332	525	616	226	35			1,917
Senior	39	89	96	98	100	3			425
Cash Fare Total	225	438	654	753	327	38	0	0	2,435
Roam Token									
Roam Token Total:	0	2	1	0	0	0	0	0	3
10 Ride Pass									
10 Ride Total:	3	6	0	0	1	0	0	0	10
3 Day Pass									
3 Day Pass Total:	12	12	0	12	10	0	0	0	46
Day Pass									
Day Pass Total:	56	151	221	154	141	9	0	0	732
31 Days Pass									
Adult	0	9	9	6	1	3			28
Senior	0	0	1	9	0	0			10
31 Days Pass Total:	0	9	10	15	1	3	0	0	38
93 Days Pass									
Adult	0	3	4	4	0	1			12
Senior	0	1	0	1	0	0			2
93 Days Pass Total:	0	4	4	5	0	1	0	0	14
186 Days Pass									
Adult	1	2	4	0	1	6			14
Senior	0	0	0	0	0	0			0
186 Days Pass Total:	1	2	4	0	1	6	0	0	14
Low Income Pass									
Low Income Pass Total:	1	0	13	3	1	5	0	0	23
Regional Ride - Pass Holder	1	12	11	18	2	2			46
Regional Ride - Cash	0	1	0	3	0	0			4
Hotel Partners	424	731	928	1,049	559	260			3,951
Transfers - Local	0	14	12	24	11	2			63
Transfers - Regional to Local	3	2	5	11	6	0			27
Infant Free Ride	2	4	25	4	4	0			39
Accessories	1	4	3	0	1	0			9
Special (TMC Free Trip)	0	1	2	0	0				3
Total Farebox Ridership		1,393	1,893	2,051	1,065	326			6,728

+3% Industry Correction		42	57	62	32	10			202
Total Ridership	729	1,435	1,950	2,113	1,097	336	0	0	7,659

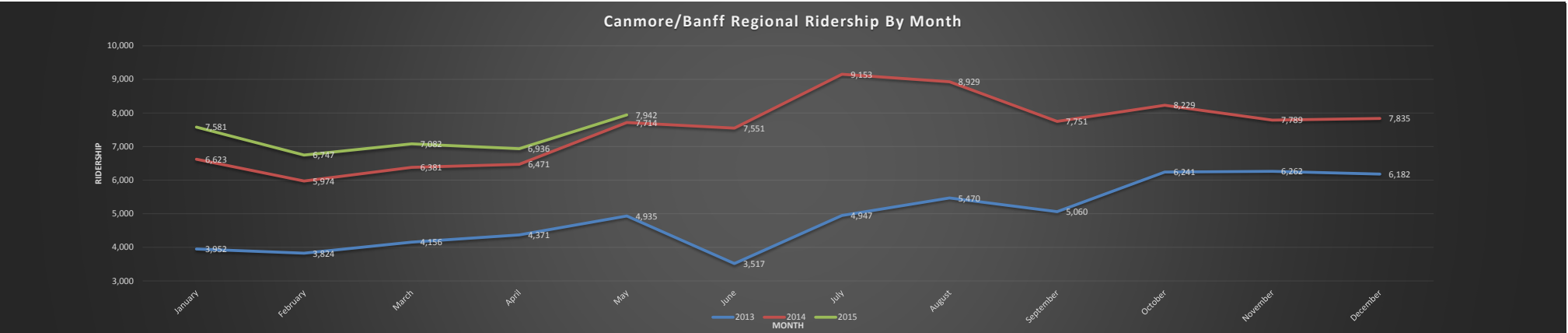
Bow Valley Regional Transit Services Commission



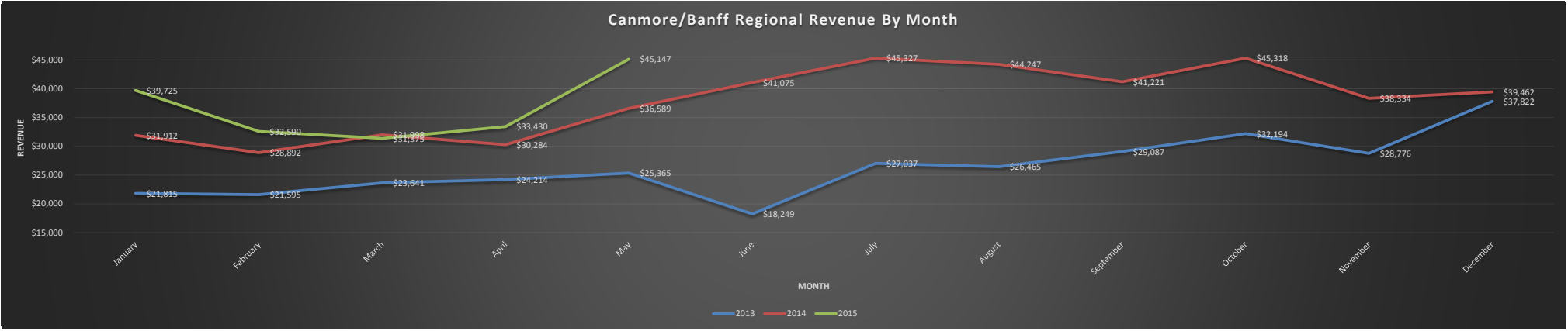
Banff/Canmore Regional Service
Ridership and Revenue Statistics

Regional Ridership/Revenue Analysis

RIDERSHIP								
Month	2013	2014	2015	2014 Running Total	2015 Running Total	Running Total Difference	2014 to 2015 Monthly Comparison	2014 to 2015 Monthly % Difference
January	3,952	6,623	7,581	6,623	7,581	958	958	14.5%
February	3,824	5,974	6,747	12,597	14,328	1,731	773	12.9%
March	4,156	6,381	7,082	18,978	21,410	2,432	701	11.0%
April	4,371	6,471	6,936	25,449	28,346	2,897	465	7.2%
May	4,935	7,714	7,942	33,163	36,288	3,125	228	3.0%
June	3,517	7,551		40,714				
July	4,947	9,153		49,867				
August	5,470	8,929		58,796				
September	5,060	7,751		66,547				
October	6,241	8,229		74,776				
November	6,262	7,789		82,565				
December	6,182	7,835		90,400				
Grand Total:	58,917	90,400			0			
								End of Year Comparison to 2013



REVENUE									
Month	2013	2014	2015	2014 Running Total	2015 Running Total	Running Total Difference	2014 to 2015 Monthly Comparison	2014 to 2015 Monthly % Difference	
January	\$ 21,815	\$ 31,912	\$ 39,725	\$31,912	\$39,725	\$7,813	7,813	24.5%	
February	\$ 21,595	\$ 28,892	\$ 32,590	\$60,803	\$72,315	\$11,512	3,698	12.8%	
March	\$ 23,641	\$ 31,998	\$ 31,375	\$92,801	\$103,690	\$10,889	-623	-1.9%	
April	\$ 24,214	\$ 30,284	\$ 33,430	\$123,085	\$137,120	\$14,035	3,146	10.4%	
May	\$ 25,365	\$ 36,589	\$ 45,147	\$159,674	\$182,267	\$22,592	8,558	23.4%	
June	\$ 18,249	\$ 41,075		\$200,749					
July	\$ 27,037	\$ 45,327		\$246,076					
August	\$ 26,465	\$ 44,247		\$290,323					
September	\$ 29,087	\$ 41,221		\$331,544					
October	\$ 32,194	\$ 45,318		\$376,862					
November	\$ 28,776	\$ 38,334		\$415,196					
December	\$ 37,822	\$ 39,462		\$454,658					
Grand Total:	\$ 316,260	\$ 454,658	\$ 182,267					-59.9%	



CANMORE/BANFF REGIONAL TRANSIT REVENUE BREAKDOWN
2015 Actual

Month	Fares	Passes	Other	Total	Budget
January	\$27,798	\$11,927	\$0	\$39,725	\$37,683.33
February	\$25,815	\$6,775	\$0	\$32,590	\$21,683.33
March	\$27,060	\$4,315	\$0	\$31,375	\$29,683.33
April	\$26,230	\$7,200	\$0	\$33,430	\$19,683.33
May	\$29,827	\$15,320	\$0	\$45,147	\$19,683.33
June				\$0	\$29,683.33
July				\$0	\$39,683.33
August				\$0	\$39,683.33
September				\$0	\$39,683.33
October				\$0	\$21,683.33
November				\$0	\$19,683.33
December				\$0	\$37,683.33
Totals:	\$136,730	\$45,537	\$0	\$182,267	\$356,200

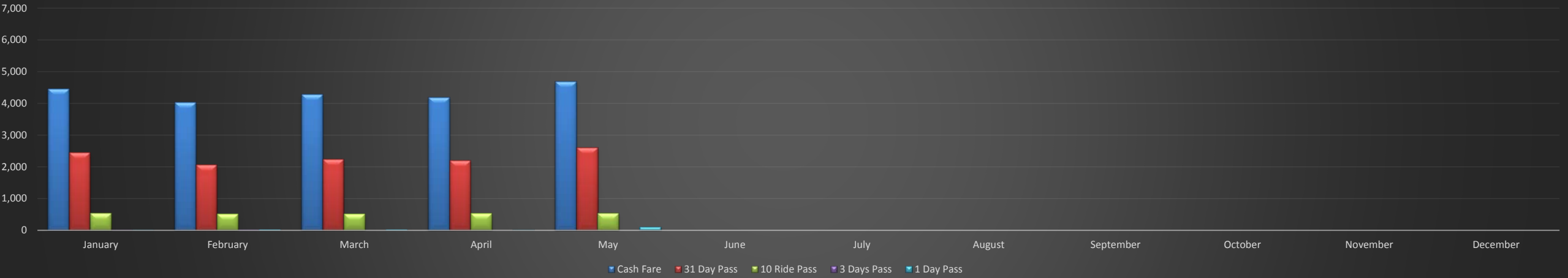
CANMORE/BANFF REGIONAL TRANSIT REVENUE BREAKDOWN
2014 Actual

Month	Fares	Passes	Other	Total	Budget
January	\$23,616	\$8,296		\$31,912	\$21,683.33
February	\$20,707	\$8,185		\$28,892	\$21,683.33
March	\$21,635	\$10,363		\$31,998	\$21,683.34
April	\$24,809	\$5,475		\$30,284	\$22,550.00
May	\$29,214	\$7,375		\$36,589	\$22,550.00
June	\$30,145	\$10,930		\$41,075	\$22,550.00
July	\$37,817	\$7,510		\$45,327	\$33,516.66
August	\$37,402	\$6,845		\$44,247	\$33,516.66
September	\$31,186	\$10,035		\$41,221	\$33,516.68
October	\$34,223	\$11,095		\$45,318	\$23,916.66
November	\$30,404	\$7,930		\$38,334	\$23,916.66
December	\$30,607	\$8,855		\$39,462	\$23,916.68
Totals:	\$351,764	\$102,894	\$0	\$454,658	\$305,000

Regional Ridership By Fare Type

Fare Type	2015												
	January	February	March	April	May	June	July	August	September	October	November	December	Total
Cash Fare													
Adult	4,150	3,755	3,973	3,882	4,275								20,035
Child	156	143	145	144	180								768
Senior	153	136	161	165	226								841
Cash Fare Total:	4,459	4,034	4,279	4,191	4,681	0	0	0	0	0	0	0	21,644
31 Day Pass													
Adult	2,307	1,934	2,113	2,042	2,507								10,903
Child	35	25	23	35	33								151
Senior	105	105	109	115	71								505
31 Day pass Total:	2,447	2,064	2,245	2,192	2,611	0	0	0	0	0	0	0	11,559
10 Ride Pass													
Adult	451	403	417	418	492								2,181
Child	25	23	13	18	17								96
Senior	31	52	36	30	27								176
LITP	42	37	54	66	73								
10 Ride Pass Total:	549	515	520	532	536	0	0	0	0	0	0	0	2,453
3 Days Pass													
Adult	9	17	0	4	0								30
Child	0	0	0	0	0								0
Senior	3	0	0	0	0								3
3 Days Pass Total:	12	17	0	4	0	0	0	0	0	0	0	0	33
1 Day Pass													
Adult	13	25	24	11	62								135
Child	0	0	1	0	36								37
Senior	2	0	1	3	7								13
1 Day Pass Total:	15	25	26	14	105	0	0	0	0	0	0	0	185
Column1	Column2	Column3	Column4	Column5	Column6	Column7	Column8	Column9	Column10	Column11	Column12	Column13	Column14
Bicycle	5	18	87	253	470								833
BVRTSC Staff	85	73	80	71	85								394
Regional Transfer from Banff Local Service	14	19	12	3	9								57
Total Farebox Ridership	7,581	6,747	7,082	6,936	7,942	0	0	0	0	0	0	0	35,874
+3% Industry Correction	0	0	0	0	0	0	0	0	0	0	0	0	0
Total Ridership	7,581	6,747	7,082	6,936	7,942	0	0	0	0	0	0	0	35,874

Regional Ridership by Fare Type 2015



	Regional Ridership By Fare Type												
Fare Type	2014												
	January	February	March	April	May	June	July	August	September	October	November	December	Total
Cash Fare													
Adult	3,752	3,274	3,666	3,829	4,499	4,456	5,641	5,542	4,549	5,106	4,519	4,607	53,440
Child	100	50	53	63	86	123	170	174	108	143	113	109	1,292
Senior	135	127	160	112	171	217	246	252	328	167	142	125	2,182
Cash Fare Total:	3,987	3,451	3,879	4,004	4,756	4,796	6,057	5,968	4,985	5,416	4,774	4,841	56,914
31 Day Pass													
Adult	2,103	2,005	1,995	1,938	2,381	2,140	2,462	2,097	1,964	2,060	2,250	2,347	25,742
Child	20	13	11	23	24	17	1	0	38	49	34	27	257
Senior		70	43	92	62	41	70	227	106	95	93	86	985
31 Day pass Total:	2,123	2,088	2,049	2,053	2,467	2,198	2,533	2,324	2,108	2,204	2,377	2,460	26,984
10 Ride Pass													
Adult	345	377	361	365	392	414	369	448	498	476	472	373	4,890
Child	29	9	45	5	14	23	28	12	20	21	36	14	256
Senior	36	19	23	17	28	27	45	41	71	41	44	59	451
LITP										27	54	58	
10 Ride Pass Total:	410	405	429	387	434	464	442	501	589	565	606	504	5,597
3 Days Pass													
Adult	4	2	0	0	0	12	7	10	0	10	0	8	53
Child	0	0	0	0	0	0	0	0	0	6	0	0	6
Senior	60	0	0	0	0	0	0	0	0	0	0	0	60
3 Days Pass Total:	64	2	0	0	0	12	7	10	0	16	0	8	119
1 Day Pass													
Adult	19	24	10	18	35	65	88	81	51	27	32	19	469
Child	0	0	4	0	0	0	3	5	0	0	0	0	12
Senior	0	0	0	0	2	4	16	16	6	1	0	3	48
1 Day Pass Total:	19	24	14	18	37	69	107	102	57	28	32	22	529
Bicycle	19	14	17	100	304	577	986	896	688	543	137	20	4301
BVRTSC Staff										75	60	52	187
Regional Transfer from Banff Local Service	20	4	10	9	20	12	7	24	12	5	5	9	137
Total Farebox Ridership	6,623	5,974	6,381	6,471	7,714	7,551	9,153	8,929	7,751	8,229	7,789	7,835	90,143
Total Ridership	6,623	5,974	6,381	6,471	7,714	7,551	9,153	8,929	7,751	8,229	7,789	7,835	90,143

Regional Ridership by Fare Type 2014



Report to the Bow Valley Regional Transit Services Commission

Report 2015 – 07 – Proposed re-wrapping of Regional Buses – Request for Decision

June 29, 2015

SUMMARY/ ISSUE

The current wrap on the Regional Buses was designed to last until approximately 2017 however the wrap is currently peeling around the windows with sections that are peeling and are being repaired on an ongoing basis.

In addition, there have been numerous complaints regarding visibility and not being able to see the mountains through the windows due to the wrap being too dark and obstructive.

PREVIOUS COMMISSION DIRECTION/POLICY

Budgeted for wrap replacement in 2017

INVESTIGATION

In reviewing the Regional buses, the wrap is peeling and does not appear to exemplify the high quality of service that we are promoting and living.

I personally met with a gentleman from the UK who could not understand why we would not “allow guests to be able to see the mountains in this beautiful place”. He was very complimentary about the service and the drivers however was quite upset about the viewing.

See additional email just received:

-----Original Message-----

From: DH FIELD [<mailto:dhfield@shaw.ca>]

Sent: June-29-15 4:26 PM

To: Roam Transit Information

Subject: Roam Transit Comment/Suggestion

How disappointing to see your Canmore - Banff buses still having wrapped windows. One of the most scenic drives in the world covered up. I thought there was a plan to unwrap them!

David Field, Canmore

Sent from my iPad

Proposal

- Move the capital plan up by 2 years to replace the wrap in 2015

Option

- Continue to repair the wrap until 2017

Report to the Bow Valley Regional Transit Services Commission

Report 2015 – 07 – Proposed re-wrapping of Regional Buses – Request for Decision

June 29, 2015

IMPLICATIONS:

- Better service to our customers and an improvement on the fleet image and marketability of our Regional Service

BUSINESS PLAN/ BUDGET IMPLICATIONS

- Wrap replacement would be approximately \$10,500 per bus for a total of \$21,000 moved from 2017 to 2105. Financial impact overall would be minimal as it a movement of capital expense, not an addition.

RISKS

- No risks have been identified as it is an enhancement of our current product

Attachments

